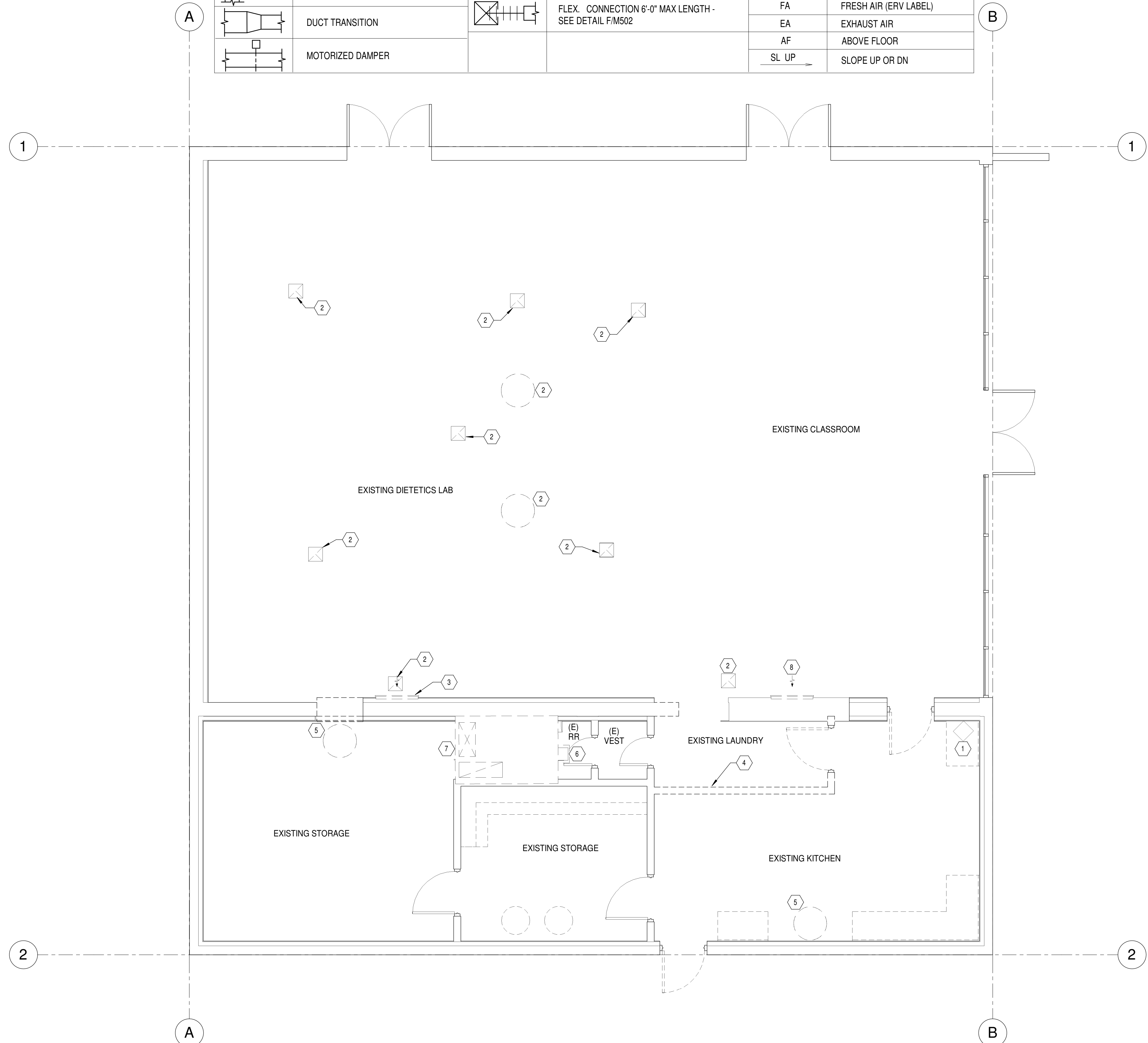


LEGEND					
SYMBOL	DESCRIPTION	SYMBOL	DESCRIPTION	SYMBOL	DESCRIPTION
	BRANCH DUCT TAKE-OFF SEE DETAIL A/M502		BDD - (BACK DRAFT DAMPER)		SUPPLY AIR
	SINGLE THICKNESS TURNING VANES		MANUAL VOLUME DAMPER		RETURN AIR/RELIEF AIR TO ERV's
	DUCT TRANSITION		FLEX. CONNECTION 6'-0" MAX LENGTH - SEE DETAIL F/M502		OUTSIDE AIR
	MOTORIZED DAMPER				TRANSFER AIR
					FRESH AIR (ERV LABEL)
					EXHAUST AIR
					ABOVE FLOOR
					SLOPE UP OR DN



PLAN NOTES

1. EXISTING UNIT HEATER TO REMAIN. PROTECT DURING CONSTRUCTION.
2. REMOVE & DISPOSE OF EXISTING GENERAL EXHAUST SYSTEMS. FIELD VERIFY EXACT LOCATION OF EXISTING ROOF EXHAUST FAN & ROUTE OF DUCTWORK. SEE ARCHITECT PLANS FOR PATCHING DETAILS.
3. EXISTING RETURN GRILLE TO BE REMOVED & REPLACED. SEE SHEET M1.1 FOR NEW ROUTE & LOCATION.
4. EXISTING EXHAUST DUCT FOR DRYER TO BE REMOVED & REPLACED. DRYER TO BE RELOCATED TO NEW LOCATION. SEE M101 FOR NEW ROUTE & LOCATION.
5. EXISTING GAS FIRED RANGE TO BE REMOVED BY OWNER. REMOVE & DISPOSE OF ITS CORRESPONDING HOOD, DUCT, & ROOFTOP EXHAUST FAN. REMOVED EXISTING GAS LINE BACK TO CEILING SPACE & CAP WITH BALL VALVE. SEE ARCHITECT PLANS FOR ROOF PATCHING DETAILS.
6. EXISTING EXHAUST FAN TO REMAIN. PROTECT DURING CONSTRUCTION.
7. EXISTING ROOF TOP UNIT & DUCTWORK BELOW TO REMAIN. PROTECT DURING CONSTRUCTION.
8. EXISTING RETURN GRILLE TO REMAIN. PROTECT DURING CONSTRUCTION.

GENERAL NOTES

1. THE CONTRACTOR SHALL CHECK AND VERIFY ALL DIMENSIONS AND CONNECTIONS ON THE JOB SITE. ALL WORK SHALL BE EXECUTED FROM MEASUREMENTS TAKEN AT THE SITE.
2. THE MECHANICAL CONTRACTOR SHALL BE RESPONSIBLE TO INSURE PROPER CODE CLEARANCES FOR ELECTRICAL AND MECHANICAL ACCESS WHEN INSTALLING ANY EQUIPMENT SUPPLIED BY THE MECHANICAL CONTRACTOR.
3. IT IS CRITICAL THAT THIS CONTRACTOR COORDINATE EQUIPMENT LOCATIONS WITH PIPING, DUCTWORK, ELECTRICAL CONDUIT AND BUILDING STRUCTURE TO INSURE CODE COMPLIANCE.
4. CEILING DIFFUSERS ARE SHOWN IN APPROXIMATE LOCATIONS. REFER TO LIGHTING PLANS AND REFLECTED CEILING PLAN FOR EXACT LOCATIONS.
5. DUCT DIMENSIONS CALLED OUT ON DRAWINGS ARE INSIDE FREE AREA DIMENSIONS. ACOUSTICAL DUCT LINER ARE TO BE ADDED TO OVERALL MEASUREMENTS.
6. ALL DUCTWORK AND PIPING WHICH PASSES THRU FIRE RATED WALLS TO BE FIRE STOPPED WITH APPROVED FOAM OR SEALANT. REFER TO SPECIFICATIONS FOR APPROVED MANUFACTURES.

1 MECHANICAL DEMO PLAN
SCALE: 1/4" = 1'-0"

revisions		
no.	description	date

project: 1806
DPW project: 19230
date: 3/27/2019

MECHANICAL
DEMO PLAN

sheet:

M1.0

	Engineered Systems Associates 1355 EAST CENTER POCATELLO, IDAHO 83201 PHONE: (208) 233-0501 FAX: (208) 233-0529 EMAIL: esa@engsystems.com ESA JOB NUMBER: 18076
	MAR 27, 2019 WAYNE C. SCHWAB
	18076
	18076